

COMPLIANCE CONFIRMS ACTIVITY. VALIDATION CONFIRMS RESILIENCE.

LEGACY ASSURANCE

One broad control.



High-level. Room for gaps.

Broad controls leave room for interpretation.

HITRUST

Three specific requirements.

- IMMUTABLE BACKUPS
- SECURE REMOTE STORAGE
- OFFLINE BACKUP MAINTENANCE

Specific. Verifiable. Gaps closed.

LEGACY ASSURANCE

Static point-in-time audit.

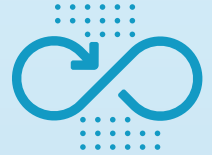


- × Snapshot in time
- × Limited visibility
- × Can't adapt
- × Static checklist

Threats evolve. Assurance should too.

HITRUST

Continuous, threat-adaptive assurance.



- ✓ Continuous monitoring
- ✓ Real-time visibility
- ✓ Threat-adaptive
- ✓ Controls work together



HITRUST assumes the performance responsibility.

With legacy assurance models, organizations bear the full responsibility of evaluating the quality, relevance, and completeness of assurance results. HITRUST reduces that burden through centralized oversight, including threat coverage validation, assessor quality reviews, and exception management.

LEGACY ASSURANCE Recipient performs tasks	ASSURANCE ATTRIBUTES	HITRUST HITRUST performs tasks
×	Validate threat coverage	✓
×	Review audit/assessor firm reputation	✓
×	Review audit/assessor firm's quality processes	✓
×	Obtain assurance for third-party service providers	✓
×	Identify and analyze AI threat coverage	✓
×	Aggregate exceptions and management responses	✓
×	Follow-up on the exceptions	✓

HITRUST actively performs and validates assurance instead of shifting burden to the customer.

HITRUST®